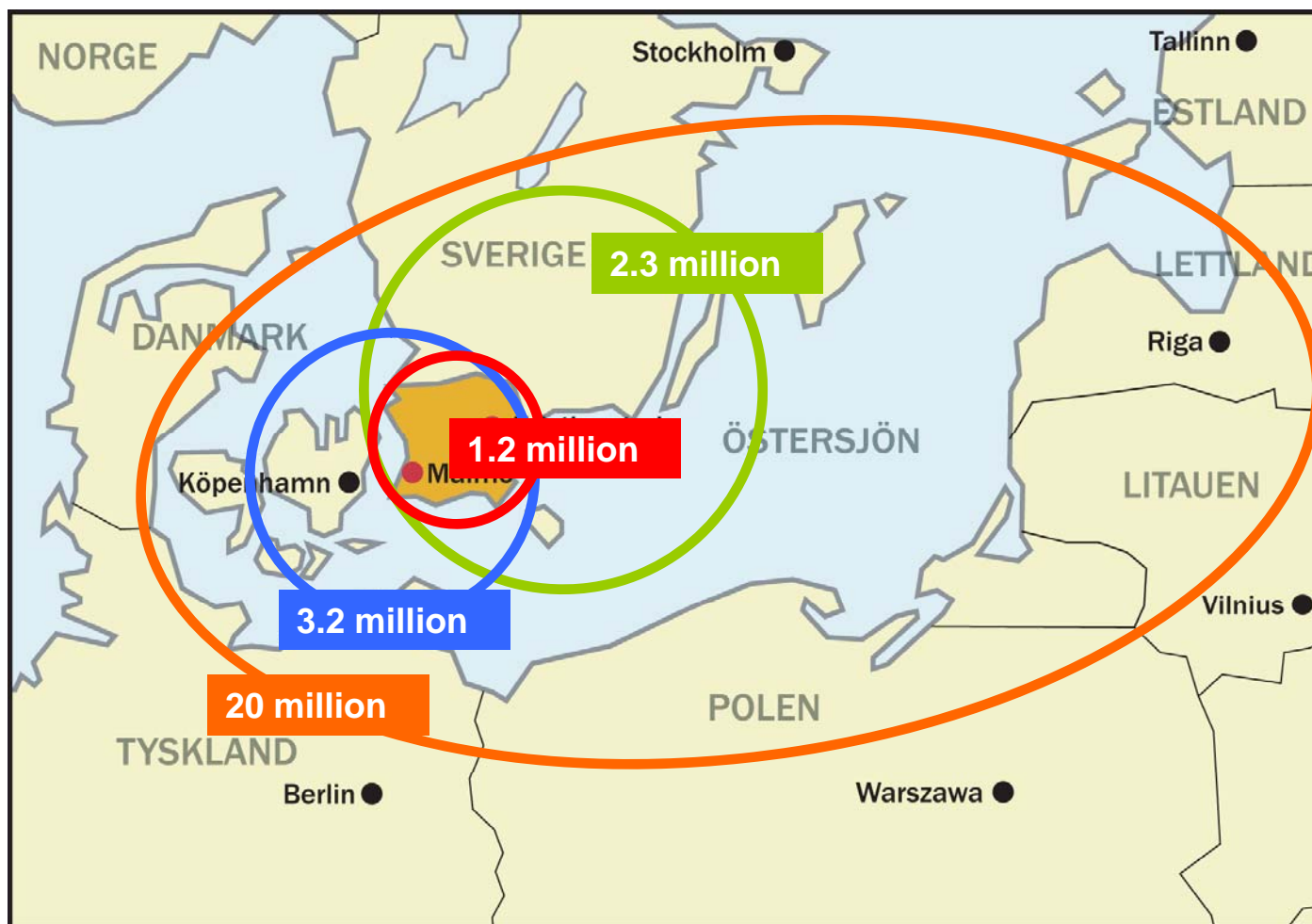




IHEDATE, 7 april 2011

Veronika Sörvik, Department for planning strategies





Skåne — a dynamic border region



Skåne in figures

Municipalities 33

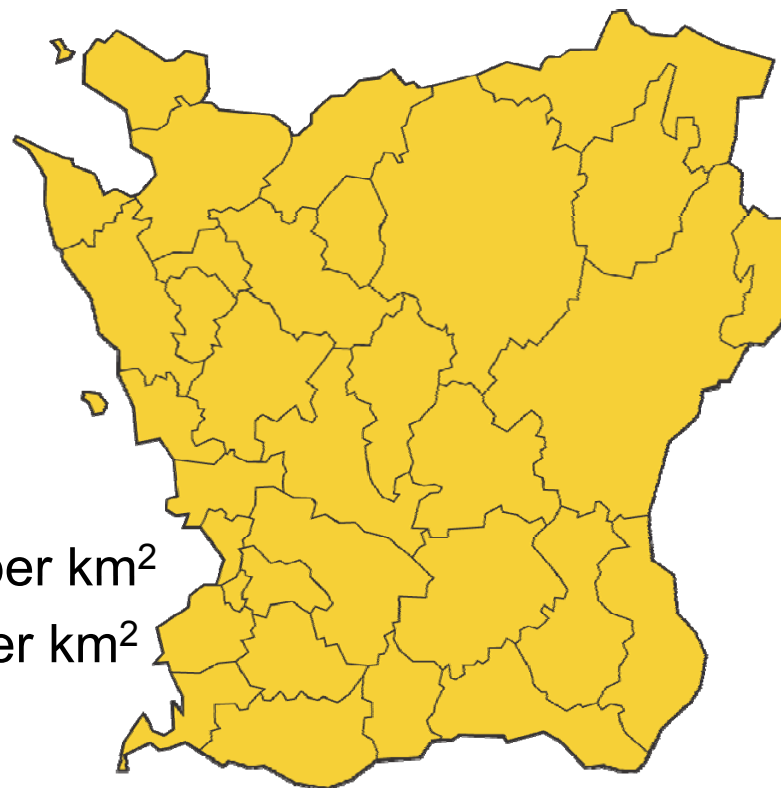
Inhabitants 2010 1 243 329

Area 11,000 km²

Population density

Skåne 113 inhabitants per km²

Sweden 23 inhabitants per km²



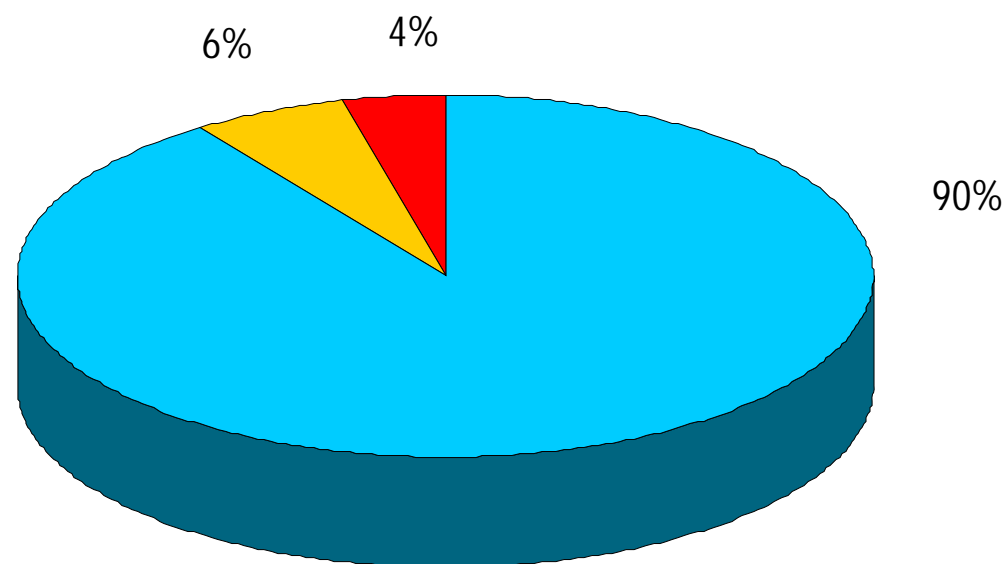
Region Skåne

Active in the following areas:

- health and medical services
- regional growth and development
- public transport
- culture
- interregional and cross-border cooperation



Region Skåne's costs



- Health and medical services
- Regional development
- Other

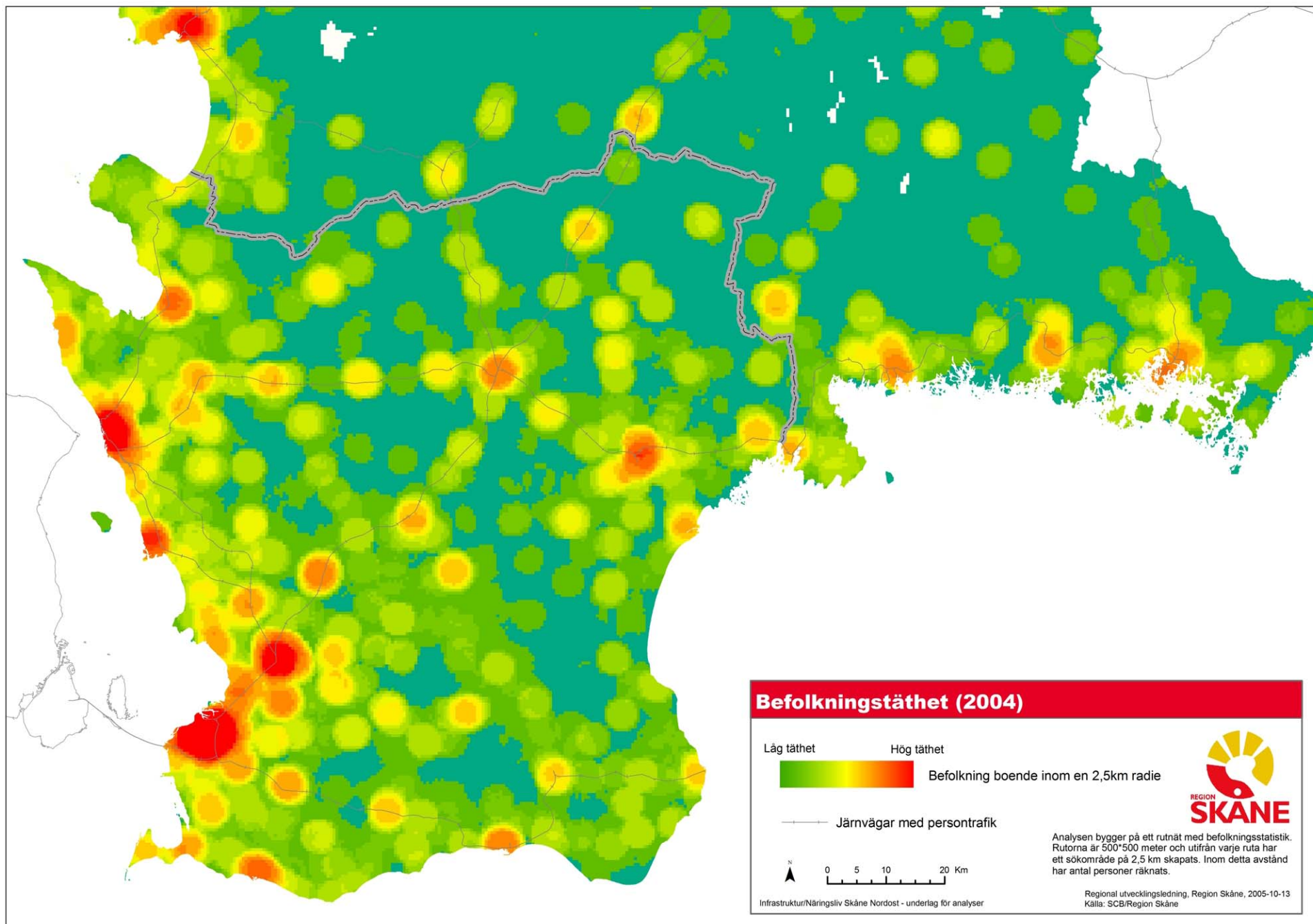


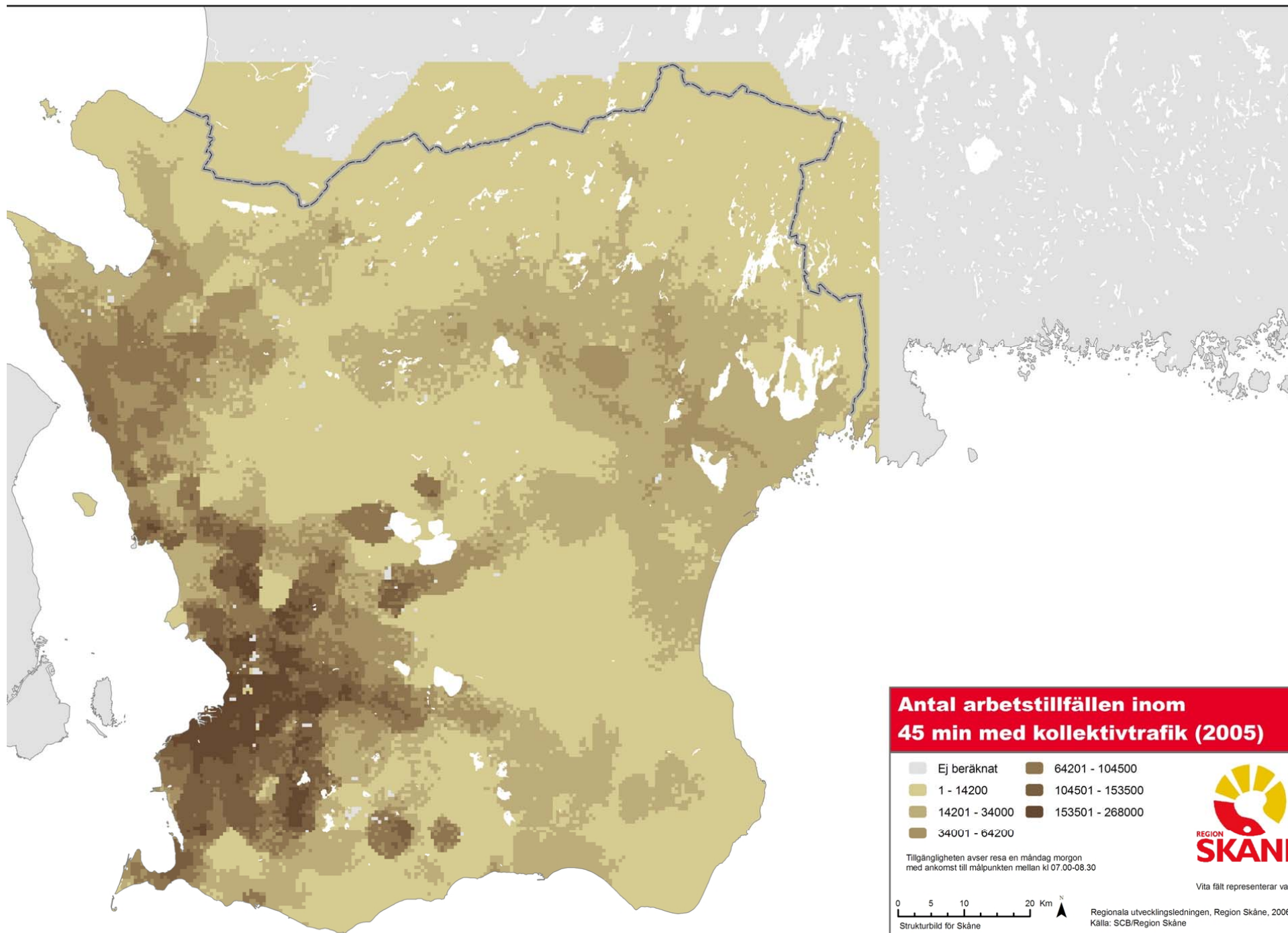
A Structural Picture of Skåne

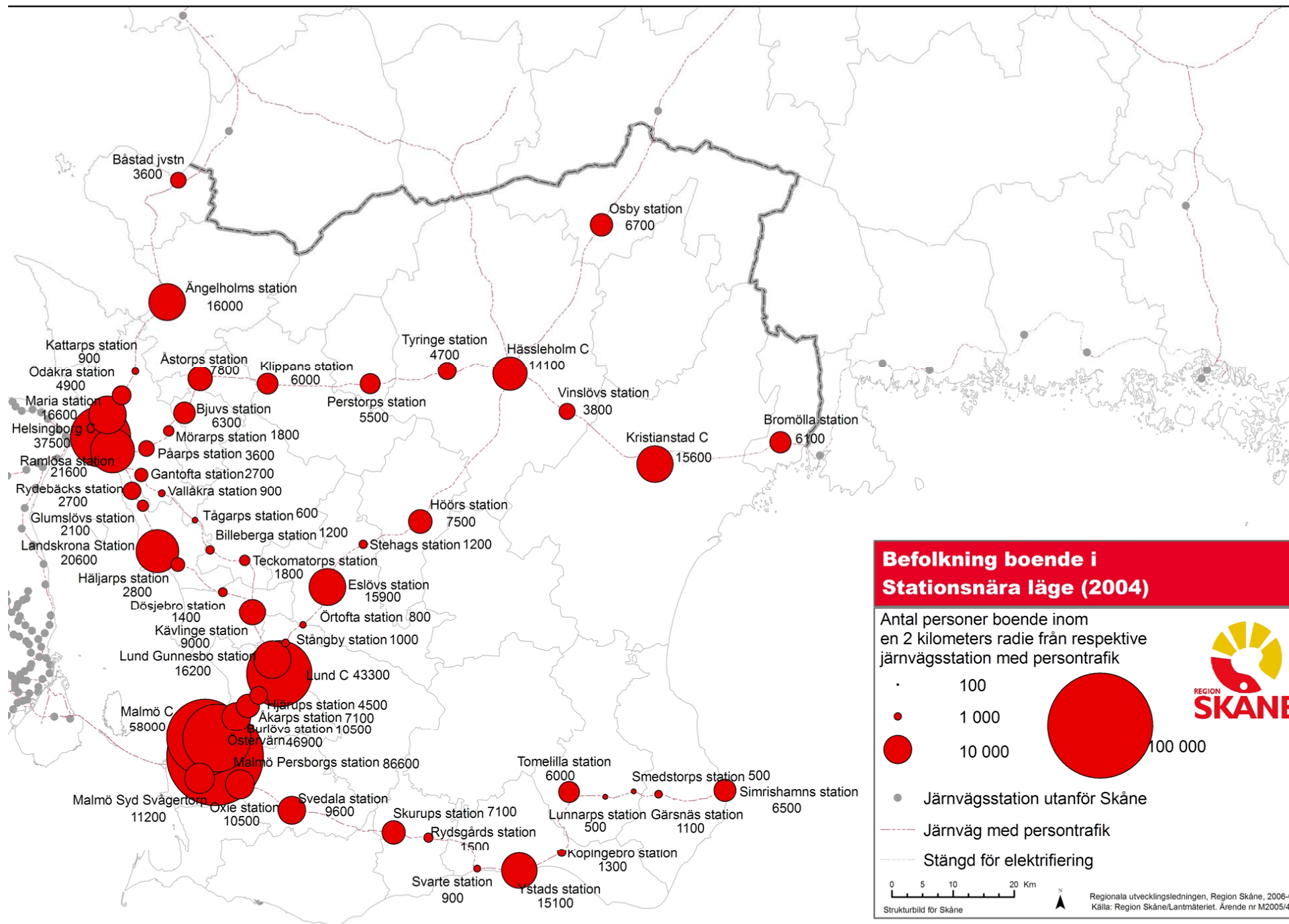


- Land usage and accessibility
- Common database
- Common strategies









Infrastructure and development in the Öresund region

- A unique cross-border project with 28 partners
- Purpose:
 - Create a new knowledge-base that will unite stakeholders in the Öresund Region
- Complete end of March 2011



IBU-Öresund comprises four activities



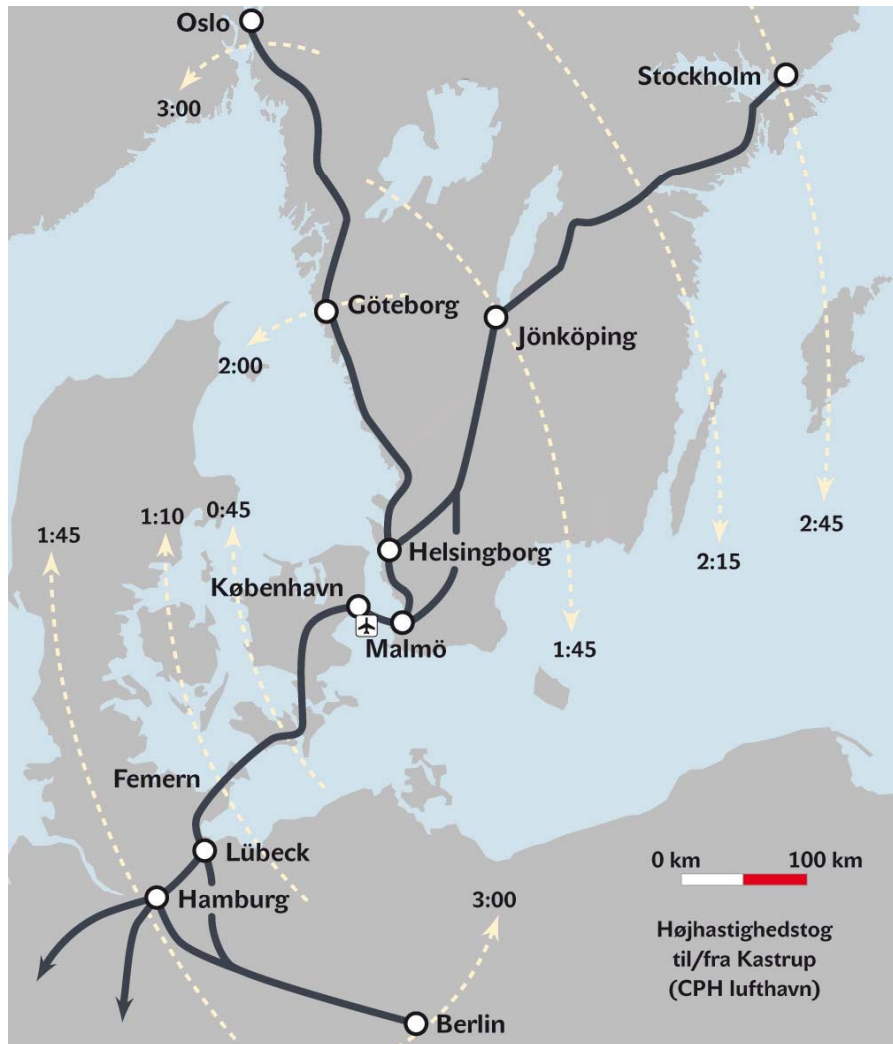
IBU 1 Infrastructure and urban development

IBU 2 The Öresund Region as an international transport hub

IBU 3 The Fehmarn Belt Link and a fixed link joining Helsingør (Denmark) and Helsingborg (Sweden)

IBU 4 A joint study of transport systems

Time saved using high-speed trains



Travel time cut by half

Stockholm-Copenhagen

2 hr 45 minutes
(today 5 hr 30 minutes)

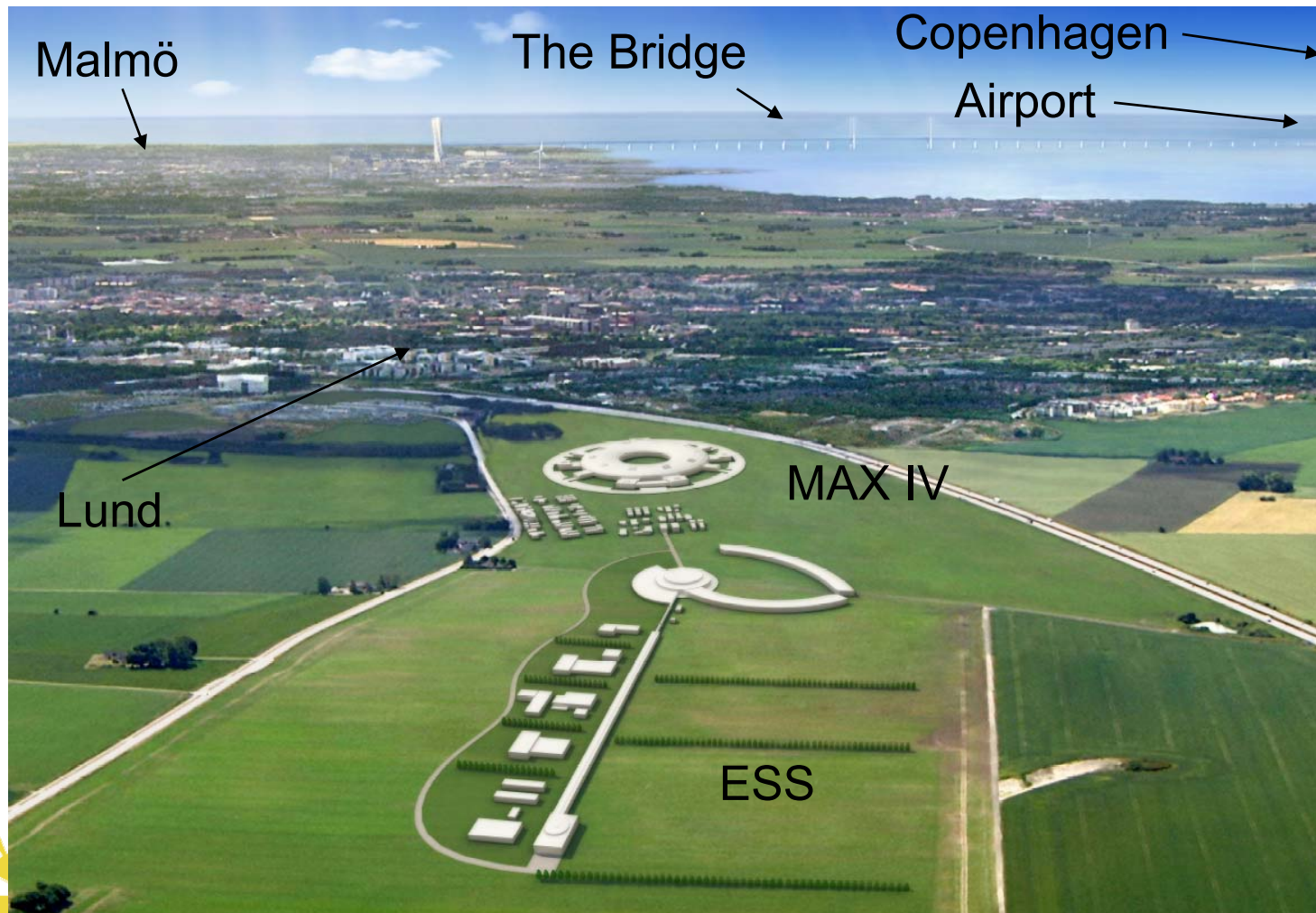
Copenhagen-Hamburg

1 hr 45 minutes
(today 4 hr 30 minutes)

ESS MAX IV in Southern Sweden - TITA



A regional cooperation project for increased growth



Nine sub-projects

- Relocation support
- Marketing
- Meeting point - Lund NE
- Foresight
- ESS and MAX IV as an innovation catalyst for trade and industry
- ESS and MAX IV, a growth factor for local and regional businesses
- Urban planning and transport infrastructure
- Land availability register
- Preliminary competence and skills supply studies



Merci de votre attention!

www.skane.se/strukturbild.se

www.essmax4tita.se

www.ibu-oresund.se

veronika.sorvik@skane.se

