



Jméno

CzechInvest

Business and Investment
Development Agency

28.01.2026

www.czechinvest.org



CzechInvest

Introduction



CzechInvest

Business and Investment Development Agency

is an agency of the **Ministry of Industry and Trade**.
Established in 1992, the agency contributes to attracting foreign investment and developing domestic companies through its services and development programs.

Our Mission:

- to **support** foreign direct investment
- to **develop** local companies
- to **implement** business-development programs
- to **improve** the business environment

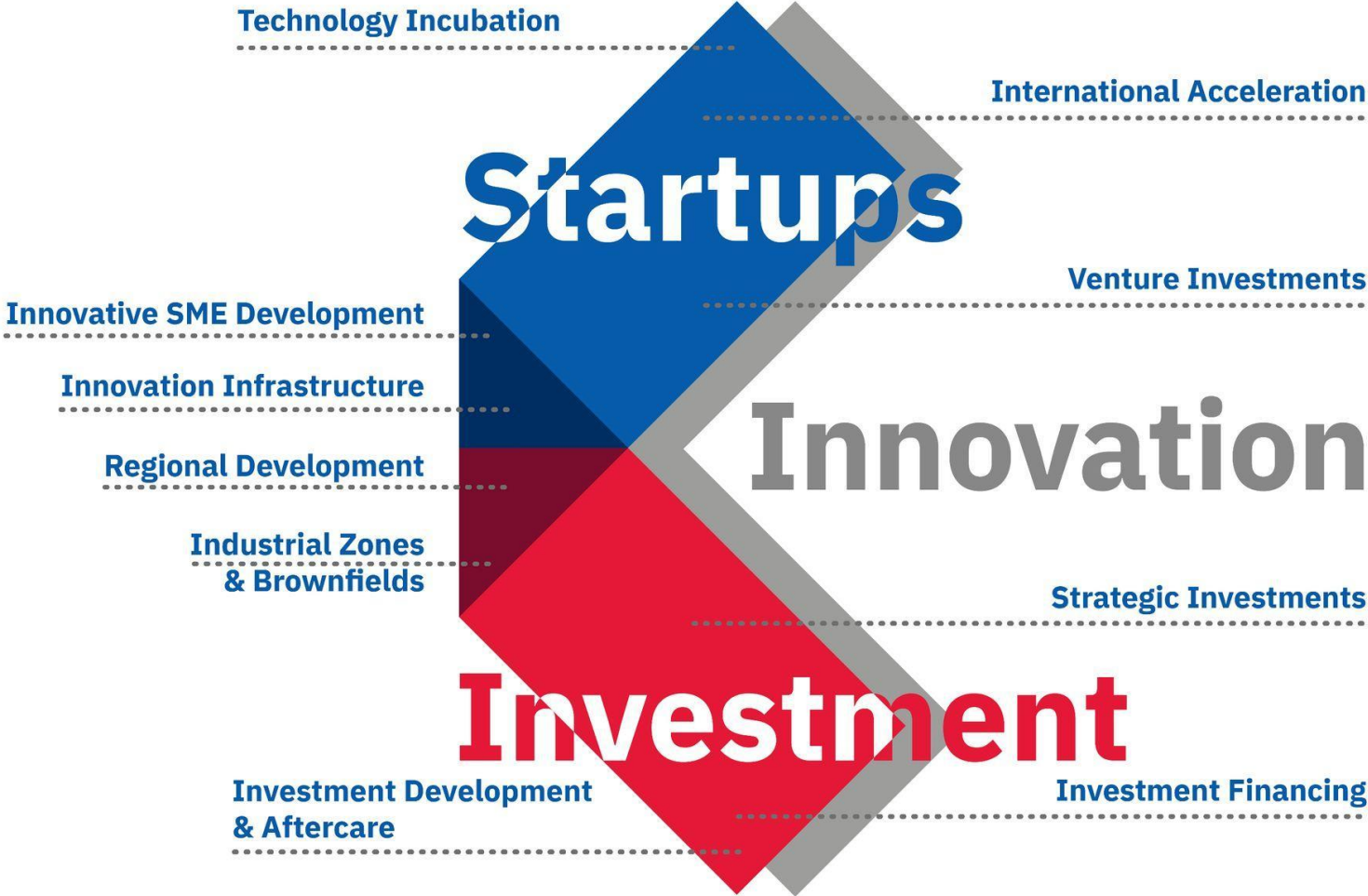


Source: CzechInvest, 2026



CzechInvest

Activities



Source: CzechInvest, 2026



Investment Opportunities



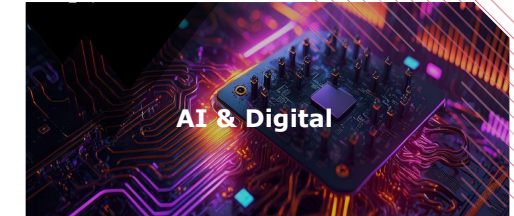
- Architecture and Public Space
- Design
- Non-Tech CCI
- Gaming
- Virtual and Augmented Reality
- Visualization



- Medical Devices
- Pharmaceuticals
- Biotechnologies
- Digital technologies in healthcare
- Advanced materials in healthcare
- Healthcare research, development, services



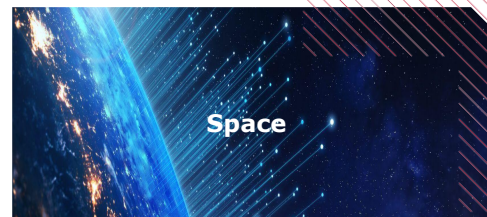
- Autonomous driving
- Smart logistics & manufacturing
- Clean mobility
- Public transport
- Railway vehicles
- Mobility as a service
- Connectivity & digitalization



- AI
- Big Data
- Blockchain
- Digital connection and IoT
- Network security
- SW and HW development
- Data security and cloud services



- Batteries & renewable energy sources
- Smart distribution networks
- Lightweight materials
- Industrial chemistry
- Technological reduction of pollution
- Sustainable industrial technology
- Sustainable food systems



- Remote sensing
- Satellite navigation
- Space security
- Microgravity and space exploration
- Advanced research in telecommunications systems
- Upstream



- 5G networks
- Aircraft components and avionics
- Radar systems
- UAV/UAS (Unmanned Aerial Vehicle and Unmanned Aircraft Systems)
- Defence-related R&D
- Aircraft dev. and manufacturing
- Dev. and manufacturing of engines and auxiliary power units (APUs)

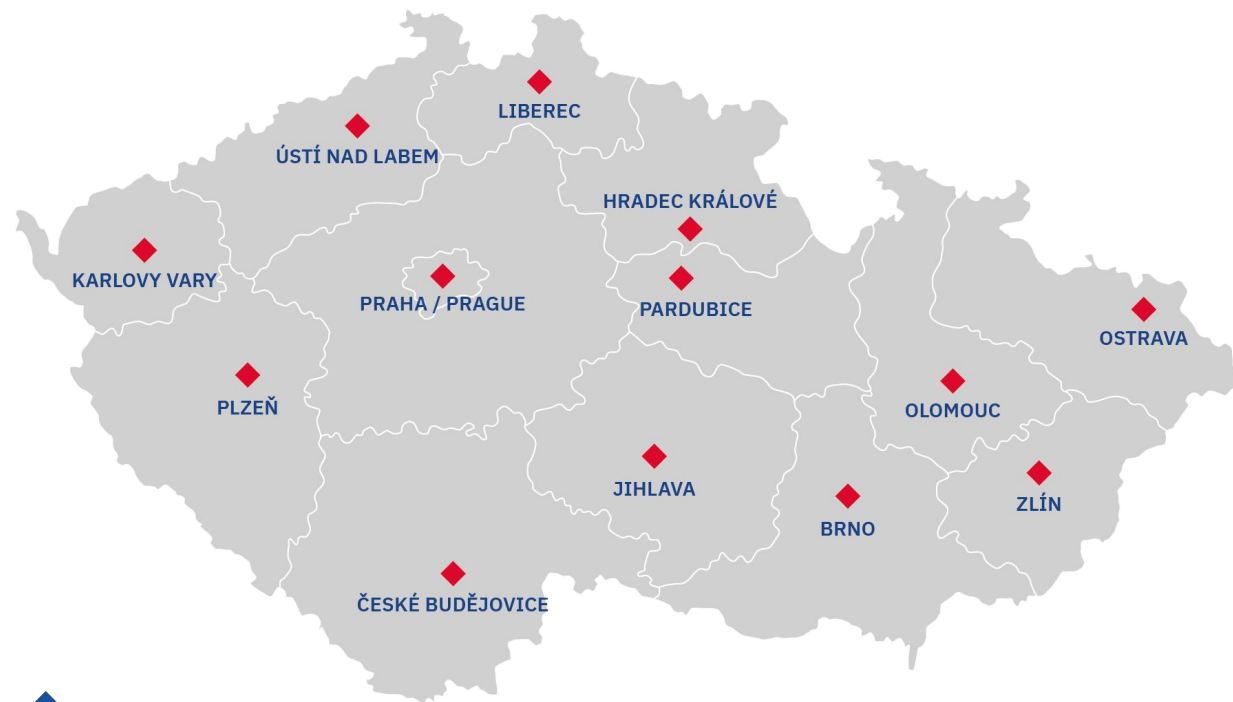


- Advanced machines
- Nanotechnology
- Advanced materials
- Robotics
- Innovative manufacturing technologies
- Micro and nanoelectronics
- 3D print

CzechInvest

Regional Offices

- 13 regional offices
- More than 30 years experience and deep knowledge of the business opportunities



Source: CzechInvest, 2026

CzechInvest

Worldwide Network



Source: CzechInvest, 2026

CzechInvest

Core Services



Our Services for Potential Investors



Business intelligence & Regulatory navigation



Sectoral analyses
e.g. available workforce



Tailor-made visits to Czechia



Identification of potential supply partners



Consultancy on available financial support (investment incentives)



Identification of green or brownfield sites, production facilities and offices



Liaison with government bodies



Organization of meetings with consulting & advisory firms in cooperation with AFI

Source: CzechInvest, 2026

All CzechInvest's services are free of charge as part of the Czech government's business support measures



Assistance with Business Localization



Database of business properties

- Comprehensive database of 600 properties
- Land plots for industry and services
- Industrial halls
- Space for science and research
- Offices
- Brownfields



National database of 4458 brownfields

- CzechInvest is an administrator of selected sites that correspond to the definition of a brownfield. The public part of the database serves as an offer of sites for investors.



Real estate offers for investors and organization of site visits



Information on the real estate market and providing consultations



Drive for
success

Source: CzechInvest, 2026

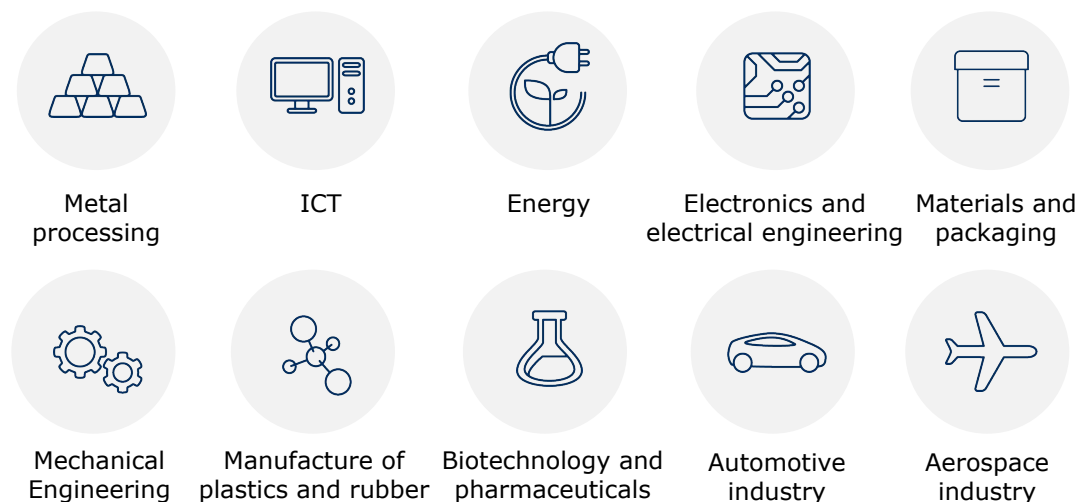
9. HOLEŠOV			
COMMENT			
Strategic Industrial Zone Holešov is located in Zlín region near to the town Zlín (75,000 inhabitants). New highway D49 to Slovakia is planned in a direct neighborhood to the industrial zone. There is a new transformer station in the zone with capacity of 30 MW. Maximal height restriction for solitary building is 30 meters.			
GENERAL INFORMATION			
Type	Total area (in sqm)	Area available (in sqm)	Available from
Greenfield	3 600 000	800 000	Immediately
UTILITIES			
Electricity	Water	Waste Water	Gas
8 - 30 MW (2021) further upgrade possible	150 m ³ /h	50 m ³ /h Possible upgrade to 120 m ³ /h	3500 m ³ /h
COMMERCIAL TERMS			
Purchase price		Rental price	
From 20.00 EUR/sqm		Not applicable	
TRANSPORT INFRASTRUCTURE			
Distance to motorway exit		Public transport	Railway siding
8 km		On site	On site



Assistance with Identifying Suppliers

- Supporting Czech suppliers
- Developing supply chains
- Supplier database with more than **3,600 potential suppliers**
- Generating Market Screens, an overview and **identification of potential suppliers** for companies
- Supplier Days

Source: CzechInvest, 2026



Aftercare Services



Consultancy

- Czech investment climate
- Local legislation
- Labour law
- Financial support instruments
- Work and residence visas for foreign employees and the top management



Connection

- Local and international talent for business needs
- Universities and institutions of applied research
- Relevant government bodies
- Czech supply partners



Organization

- Meetings with municipal representatives and government authorities
- Viewings of selected sites from our business properties database
- Reference meetings
- Registration of foreign employees in the Czech Republic
- Visa seminars, regional HR events and nationwide conferences for foreign investors



We assist foreign investors even **after** their **initial investment** in the Czech Republic and we assist them with **expanding** their business activities

Source: CzechInvest, 2026

Visa Support

- Consultation on the visa process
- Consultation on legal employment of foreigners
- Administration of government visa programs
- Migration process support for top management of strategic investors
- Visa seminars for employers
- Visa platforms for relocation specialists



34,000

new work permits
granted in 2021

*(employee card, blue card,
intra-corporate transfer card)*



54,770

foreign students studying
at Czech universities
in 2022



1.1 million

foreigners living in the
Czech Republic in 2023



Drive for
success

Source: CzechInvest, 2026

CzechInvest

Project Statistics



Overall | Project Statistics

Projects Mediated by CzechInvest (1993–2025)



2 267

Approved Projects



342 ths.

New Jobs Created



\$56 bn.

Total Investments



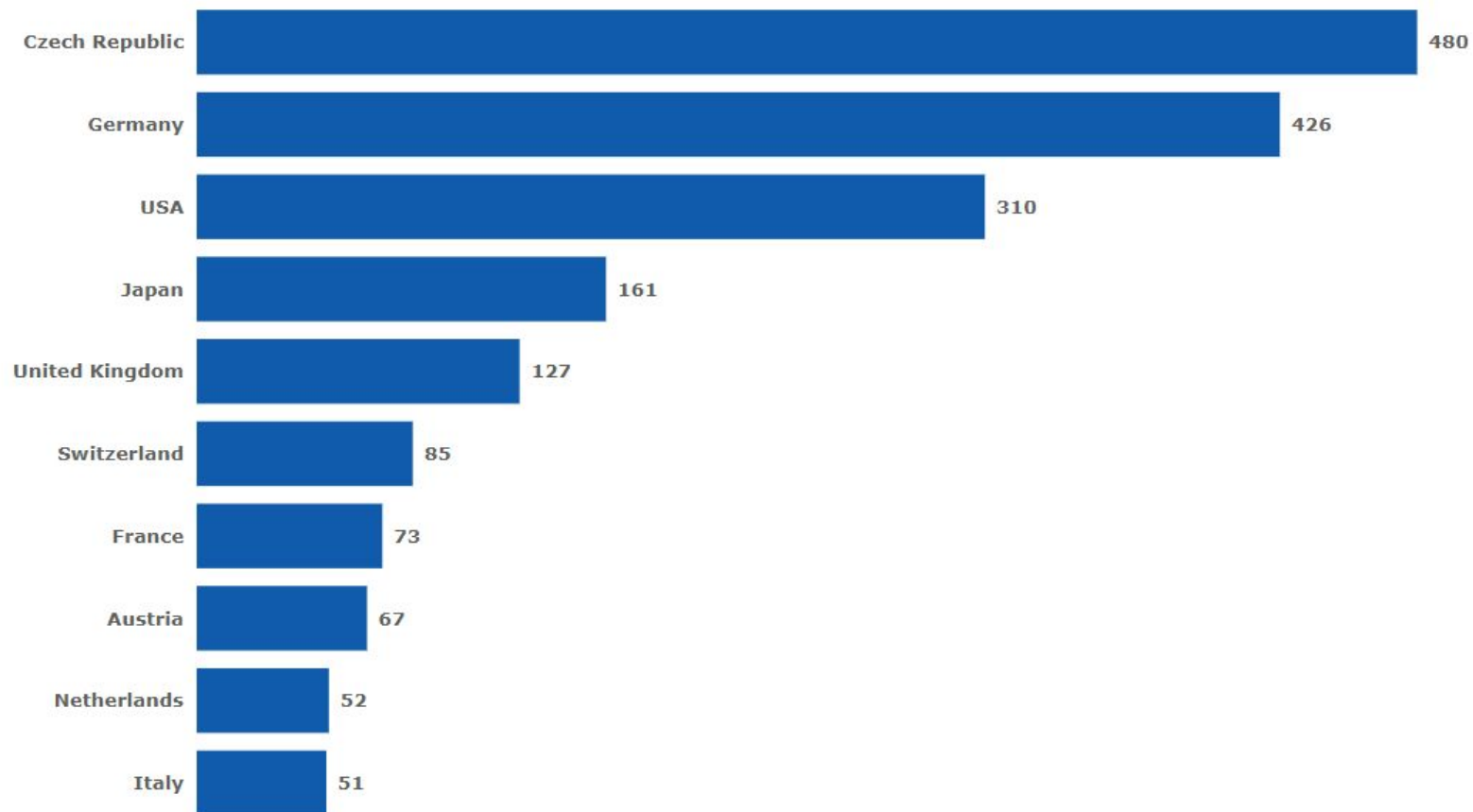
Drive for
success

Source: CzechInvest, 2026



TOP10 | Source Countries

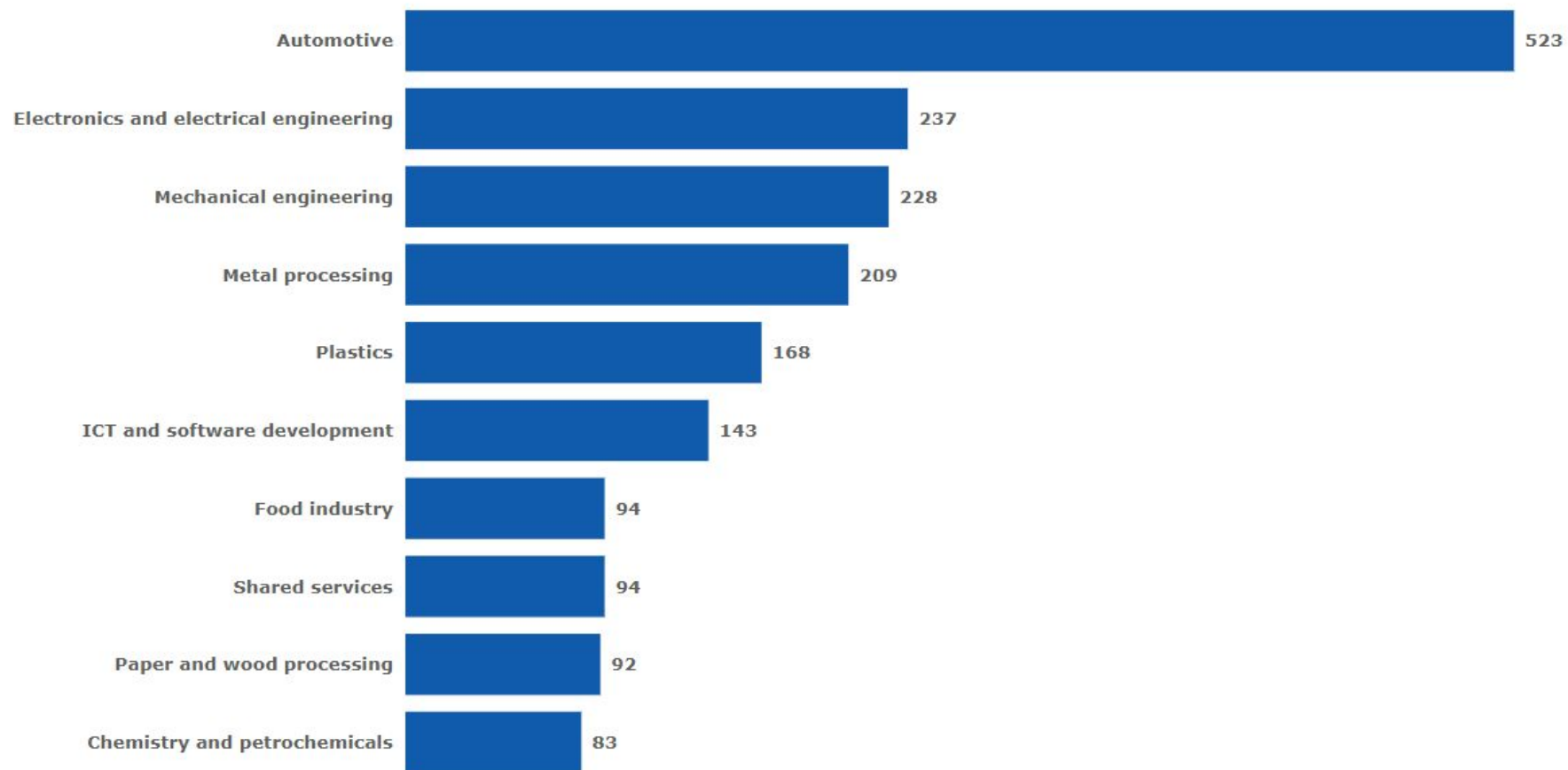
Number of Projects Mediated by CzechInvest (1993–2024)



Source: CzechInvest, 2025

TOP10 | Sectors

Number of Projects Mediated by CzechInvest (1993–2024)

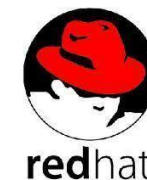


Source: CzechInvest, 2025

TOP10 | Foreign Investors

Projects Mediated by CzechInvest (1993–2024)

Company	Sector
Toyota	<i>Automotive</i>
Hyundai	<i>Automotive</i>
Volkswagen	<i>Automotive</i>
Denso	<i>Automotive</i>
Nexen	<i>Rubber Industry</i>
Eaton	<i>Electronic Components</i>
Red Hat	<i>Software Development</i>
Honeywell	<i>Aerospace, Strategic Services</i>
GE Aviation	<i>Aerospace</i>
BMW	<i>Automotive</i>



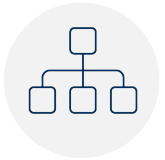
Why Czechia?



Location in the very **heart of Europe**



Highly educated and technically **skilled workforce**



Functional and cooperative **institutional framework**



Great academic potential for **R&D** projects



Transparent and predictable business climate



Close links between industry, universities and business



Access to open **EU** market



Strong presence of large **international companies**





THANK YOU FOR ATTENTION

Jméno

Příjmení

Číslo

E-mail

www.czechinvest.org

Business and Investment Development Agency
Stepanska 15, 120 00 Praha 2, Czech Republic